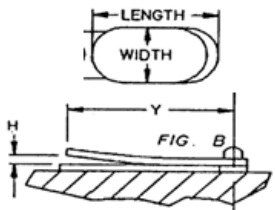
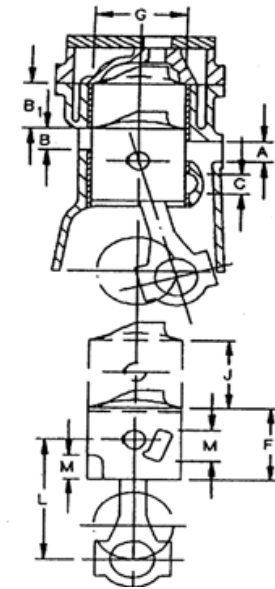


Date: 02-25-2015

Model Year:

RACE CLASS: SST-45



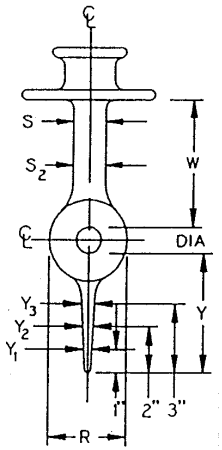
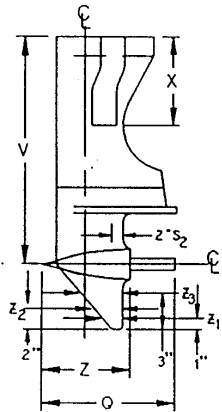
MANUFACTURER				OMC					
ADVERTISED SALES NAME				JOHNSON / EVINRUDE 45SS					
CLASS; DISPLACEMENT MAX			in ³	SST-45; 44.9					
NUMBER OF CYLINDERS				2					
MIN. VOLUME OF COMBUSTION CHAMBER (INC'L SPARK PLUG HOLE)			cm ³	35.0					
CARBURETOR	VENTURI	±.015	in	1.250					
	BORE	±.015	in	1.500					
	QUANTITY PER ENGINE			2					
POWERHEAD SPECIFICATIONS	G	CYLINDER BORE	±.005	in	3.187 +.035		OEM +.030 piston is	Approved	
	J	PISTON STROKE	±.011	in	2.820				
	L	ROD LENGTH	±.006	in	4.750				
	K	DECK HEIGHT	±.012	in	7.575		7.563 Min.		
	F	PISTON LENGTH	±.030	in	2.973				
	M	PORT HEIGHT	±.030	in	2 @ .615				
	NUMBER OF PORTS PER CYLINER	A	TRANSFER		3				
		B	EXHAUST		1				
		C	PISTON		--				
	PORT HEIGHT	A	TRANSFER	±.035	in	2 @ 0.584; 1 @ .546			
		B	EXHAUST	±.035	in	1.107 (plus chamfer)		See note #2	
		B ₁	EXHAUST	±.035	in			See Table in Notes	
		C	PISTON	±.035	in	--			
	PORT TIMING	A	TRANSFER	±2°	ATC	2 @ 118°; 1 @ 120°			
		B	EXHAUST	±2°	ATC	92°			
		C	PISTON	±2°	ATC	--			
	REED BLOCK (ONE CYLINDER)	# OF PORTS			8				
		LENGTH x WIDTH SIZE OF PORTS			MAX	in	1.41x0.675		
		REED MAT'L			STAINLESS STEEL		See Note # 3		
		REED THICKNESS			±.001	in	.010		
		H	REED STOP HGT.	MAX	in	.268		See Notes # 1 & # 3	
		Y	CHECKING DIS.	±.030	in	1.427			
	WEIGHT (ONE SET)	FLYWHEEL		MIN	lbs	9.1			
		PISTONS, RINGS, ROD, WRIST PIN, SPACERS, BEARINGS		MIN	lbs	1.7			

WARNING! FOR INSPECTION ONLY! These specifications are not intended as a guide for modification or "blueprinting" and are subject to change as needed.

Date: 02-25-2015

Model Year:

RACE CLASS: SST-45

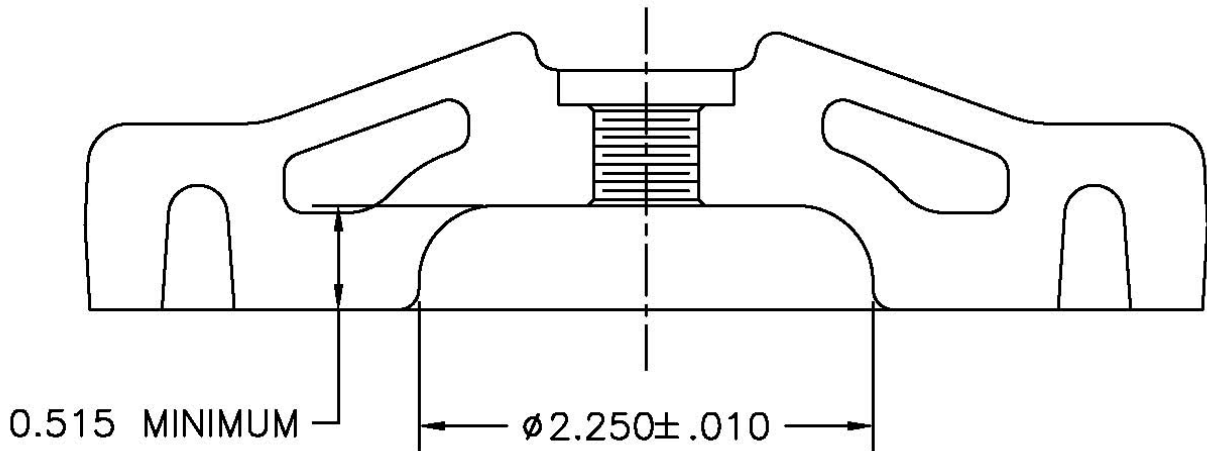


MANUFACTURER				OMC				
GEARCASE MODEL IDENTIFICATION				DR-39M				
ADVERTISED SALES NAME				JOHNSON / EVINRUDE 45SS				
GEARCASE SPECIFICATIONS	GEAR RATIO			18:18				
	X	EXHAUST TUBE LENGTH- POWERHEAD BASE TO PRIMARY TUBE END	±.25	in	9.37	Measurement does not include 3/8 plate. Pipe only		
	Q	TORPEDO LENGTH (W/ PROPSHAFT)	MAX	in	16.3			
	R	TORPEDO WIDTH	MIN	in	2.35			
	S	STRUT WIDTH	MIN	in	1.40			
	S ₂	STRUT WIDTH (2" FORWARD OF TRAILING EDGE)	MIN	in	--			
	W	DIS. FROM PROPSHAFT TO CAVITATION PLATE	±.2	in	4.16			
	Y	LENGTH OF SKEG FROM PROPSHAFT	±.2	in	4.54			
	Z	TORPEDO LENGTH	±.2	in	13.7			
	V	PROPSHAFT CENTERLINE TO POWERHEAD BASE	LONG SHAFT	±.2	in	--		
			SHORT SHAFT	±.2	in	17.1		
	Y ₁	SKEG THICKNESS	MIN	in	.21	See note # 4		
	Y ₂	SKEG THICKNESS	MIN	in	--			
	Y ₃	SKEG THICKNESS	MIN	in	.34	See note # 4		
	Z ₁	SKEG CORD LENGTH	±.2	in	3.950	See note # 4		
	Z ₂	SKEG CORD LENGTH	±.2	in	--			
	Z ₃	SKEG CORD LENGTH	±.2	in	5.700	See note # 4		
	DIA	PROPSHAFT DIA	±.01	in	.685			
	Adaptor Plate Water Outlet Hole (DIA)	±.01	In	.190				

WARNING! FOR INSPECTION ONLY! These specifications are not intended as a guide for modification or "blueprinting" and are subject to change as needed.

Date: 02-25-2015
Model Year:

SST-45 NOTES

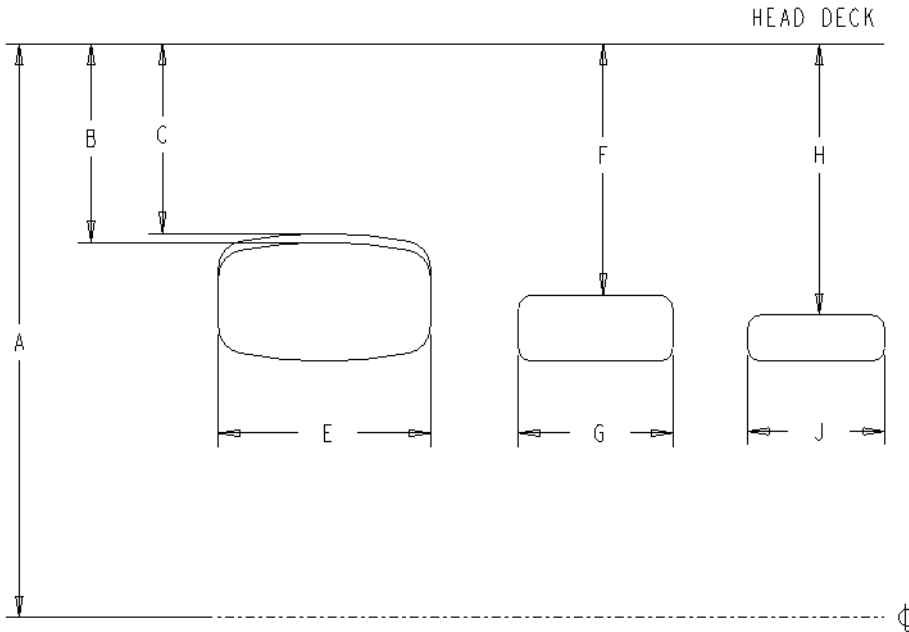


1. Incorporates .012 shims under one or both reed stops.
2. B_1 dimension to top of chamfer = 1.624 minimum.
3. Standard SST 45 reed material is Steel .010 thick. $H = .268$ maximum.
Alternate reed for SST-45 may be used: OMC P/N 568427, bottom reed = $.028 \pm .003$; top reed $.017 \pm .003$, $H = .290$ maximum.
4. Or per OMC P/N 561086 template, included in Kit P/N 568053.
5. Crankcase thickness (split line to reed gasket surface) 4.355" minimum.
6. Approve Replacement Ignition parts are: Rapair Parts, Stator **173-2926K1**, Charging Coil **173-1670**, Power Pack 113-2285, Rectifier 153-1778, Coil 183-2508, **Trigger** 133-3387
7. The Compression Volume is 35cc installed to top of plug hole.
8. The only legal Cylinder heads have casting numbers of 325602 or 325603
9. Head Gasket minimum thickness is .042
10. Standard SST 45 connecting rod has no oiling hole in the rod cap.
Alternate connecting rod (fishing motor rod) for SST 45 may be used: this rod has an oiling hole in the rod cap. It is permissible to chamfer (radius) the edges of the oiling hole. (See Photo's Below)
11. The use of new larger spine cranks and Drive Shafts is permitted.
12. Port Measurements from Block Deck to top to Port. (See Table Below)
13. **New design Upper Cowling, Lower Pan and Throttle Bracket as supplied by Sea-Way Marine are approved replacements. Throttle bracket may used with any cover/pan.**
14. **The electric start flywheel is the only legal flywheel, min. weight 9.1 lbs.**
15. **Brass bushings for the midsection as supplied by Sea-Way Marine are approved replacements. The bushing used in the top and bottom of the swivel bracket may be plastic (OMC) OR brass (Sea-Way Marine).**

WARNING! FOR INSPECTION ONLY! These specifications are not intended as a guide for modification or "blueprinting" and are subject to change as needed.

Date: 02-25-2015
 Model Year:

SST 45 Ports



Port Measurements from Block Top Deck down to Top of Port				
	SST 45	Minimum	Maximum	
		Inches	Inches	
A	Deck Height	7.563	7.587	
B	Exhaust Port	1.730	1.765	
C	Exhaust Port Chamfer	1.624	1.720	
E	Exhaust Port Width		1.910	
F	Transfer Port	2.228	2.280	
G	Transfer Width		1.470	
H	Boost Port	2.250	2.325	
J	Boost Port Width		1.210	

WARNING! FOR INSPECTION ONLY! These specifications are not intended as a guide for modification or “blueprinting” and are subject to change as needed.

Date: 02-25-2015
Model Year:



Standard SST45 Connecting Rod:



Alternate (fishing motor rod) Connecting Rod:

WARNING! FOR INSPECTION ONLY! These specifications are not intended as a guide for modification or “blueprinting” and are subject to change as needed.

Date: 02-25-2015

Model Year:

Lower Pan PN 560500*

Lower pan is completely sealed at base and has three opening's.

Outlet Water Hose from PH – 13/16" (Note Sealed by outlet hose -reference)

3/8" Drain hole in back of pan. (Reference)

Opening for cable in front of pan (Approximately 1.4" – but may vary - reference)

***These parts supplied by Sea-Way Marine, Inc.**



WARNING! FOR INSPECTION ONLY! These specifications are not intended as a guide for modification or “blueprinting” and are subject to change as needed.

Date: 02-25-2015
Model Year:

Upper cowling PN 560500*

- Vent in back of cover top - PN 560401* (Hole Diameter 2" reference)
- Vent in front of cover - PN 560402* (Vented opening 3.55" x 2.4" reference)
- Total size of vent plate 4.55" H x 5" W (Reference)
- Opening for Throttle Cable (Approximately 1" W x 2.5" H reference)
- Opening for Cables (Approximately 1.4" - But may vary - reference)

*These parts supplied by Sea-Way Marine, Inc.



WARNING! FOR INSPECTION ONLY! These specifications are not intended as a guide for modification or "blueprinting" and are subject to change as needed.

Date: 02-25-2015
Model Year:

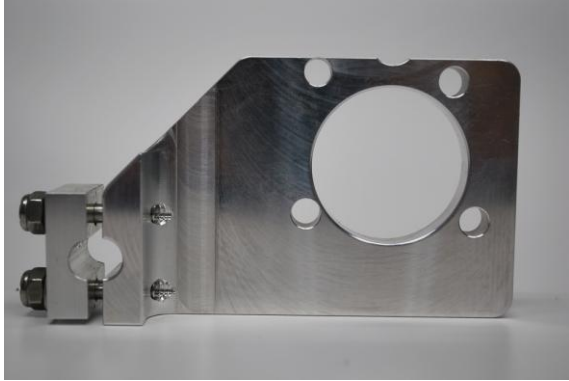
Throttle Bracket PN 560330*

Thickness – 3.75" +/- .005" (Reference)

Opening – 1.500" +/- .010" (Reference)

(Note: 1/32 Edge on opening – otherwise straight in - reference)

***These parts supplied by Sea-Way Marine, Inc.**



Midsection Bushings

Upper Bushing

Lower Bushing (Lg)

Upper Cover

Lower Cover

Upper O'Ring

Complete Bushing Replacement Kit

Current PN

309967

332663

309966

397736

301917

New PN

560100*

560101*

309966

560102*

201875

560202*

(NO Photograph of bushing)

***These parts supplied by Sea-Way Marine, Inc.**

Date: 02-25-2015
Model Year:

Rev:04-10-13 Note #10 revised to allow use of alternate connecting rod (fishing motor rod).

Rev:02.25.15 Note #6 revised to correct terminology and part numbers.

Note #13 added to allow new style upper cowling, lower pan and throttle bracket as supplied by Sea-Way Marine and approved by MTC & Commission April 1, 2014. Photo's included.

Note #14 added to update/correct specification: rope flywheel 8.1 lbs reference removed from chart. Only the electric start flywheel is allowed.

Note #15 added to allow use of brass bushings as supplied by Sea-Way Marine and approved by MTC in top and bottom location of swivel bracket. The OMC plastic parts are no longer available, this is a replacement. Either type or combination may be used.